



# Malta Association for Geographic Information

News Letter February 2007

## We're Up to Something

*Carol Agius, MAGI Chair*

After much enthusiasm in setting up the Malta Association for Geographic Information we suffered from a series of fits and starts culminating into a quiet period. The committee is aware that news and activities have been thin on the ground, but from this year we are rectifying the situation.

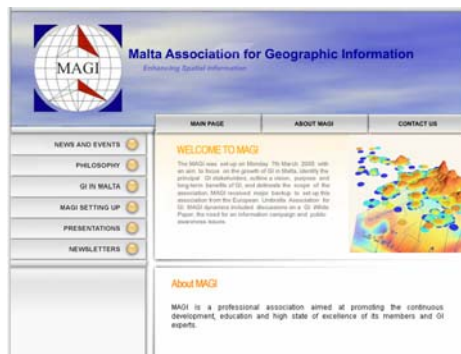
From the onset MAGI has always been about the desire of leading the exchange of GI knowledge and experience in Malta. With that aim in mind we are putting together a program of events and activities for 2007. We shall endeavour to post monthly news letters highlighting specific GI related news and events. This month's posting outlines the first steps we are taking: GI Awareness Talks, the MAGI web site and GIndustry News.

However, I need to point out that ultimately MAGI is about all of us, if you have suggestions, news that you would like to include or some free time to help the committee achieve MAGI's mission please contact us ([maltagi@gmail.com](mailto:maltagi@gmail.com)).

There has never been a more important time to bring forward the GI knowledge and capacity of Malta, European directives and technological advancements have made the GI industry an important specialisation.

I am confident that I will meet you at the forthcoming seminar and that you will contribute to promoting MAGI's success.

## MAGI News:



## MAGI Web Site

The MAGI web site is up and running. There you will find information about the association, copies of presentations, news of upcoming events, GIndustry news, and a wealth of other information.

Follow the link:

<http://www.sagisart.info/maltagi/>

## Geographic Information (GI) Awareness Talks

To promote the understanding of GI knowledge, uses and issues MAGI is starting a series of talks and seminars. The subject of the first talk will be **"Benefits of GI"**, which will be held on the 28<sup>th</sup> February 2007 between 5:30 -7:30 at the MEPA Boardroom. All those interested in GI are welcome.

Details of upcoming talks will be released in the near future.



### Meetings with the Council of European Geodetic Surveyors – CLGE

CLGE represents geodetic surveyors in 23 European States which include 20 member States with Norway, Switzerland and Bulgaria. The aim of CLGE is to enhance the development of the profession administratively, educationally and scientifically. In addition it aims to facilitate training, continuous professional development and mutual recognition together with the promotion of geodetic surveyors as a highly qualified profession.

Three Maltese associations representing the geometric sciences are in agreement that it is necessary to develop a strategic plan leading to the development and recognition of the profession in Malta. These are:

The Land Surveyors' Society – Malta (LSSM);

The Royal Institution of Chartered Surveyors – Malta (RICS Malta);

The Malta Association for Geographical Information (MAGI).

In January 2007, members of these organisations and CLGE had meetings with various ministers and the University of Malta to raise the profile of spatial sciences in Malta. The meetings were favourably received.

### *GI Industry News*

The MAGI would like to highlight industry news, making the local users conscious of what is happening in Malta's field of GI.

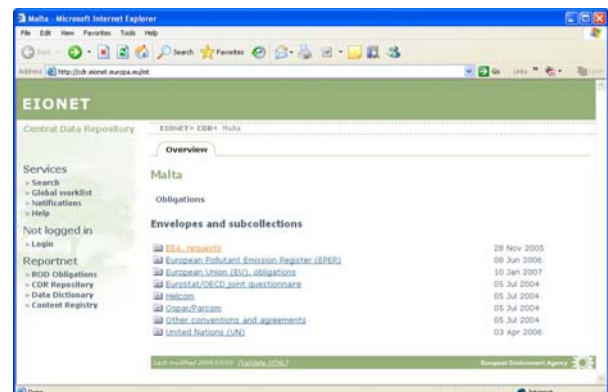
Do you have any GI related news or article you would like to share with other GI users in Malta? Please contact MAGI for further information. e-mail to: [maltagi@gmail.com](mailto:maltagi@gmail.com)

### The EEA CDR GI Repository

*By S. Formosa, MEPA*

As part of its environmental data dissemination policy, Malta's Environment Agency (the Malta Environment and Planning Authority) has taken up the European Environment Agency's (EEA) invitation to use its Common Data Repository (CDR) function. This function facilitates the process that brings data to users. MEPA had an option to create its own CIRCA webserver that would have contained all the environment-related directives data, but opted to go for the CDB since it posits Malta's data within a EU-wide data repository that also contains comparable data from other EU member states.

The CDR is managed by an EIONET National Focal Point (NFP) Team, currently administered by the ICT unit (contact [saviour.formosa@mepa.org.mt](mailto:saviour.formosa@mepa.org.mt)), which also aims to use this structure as a base for national information datasets, spreadsheets and spatial information as appropriate. In fact it is already being used to deposit GI layers such as Natura2000, CCDA, water data, amongst others.



The link to the site: <http://cdr.eionet.europa.eu/mt>



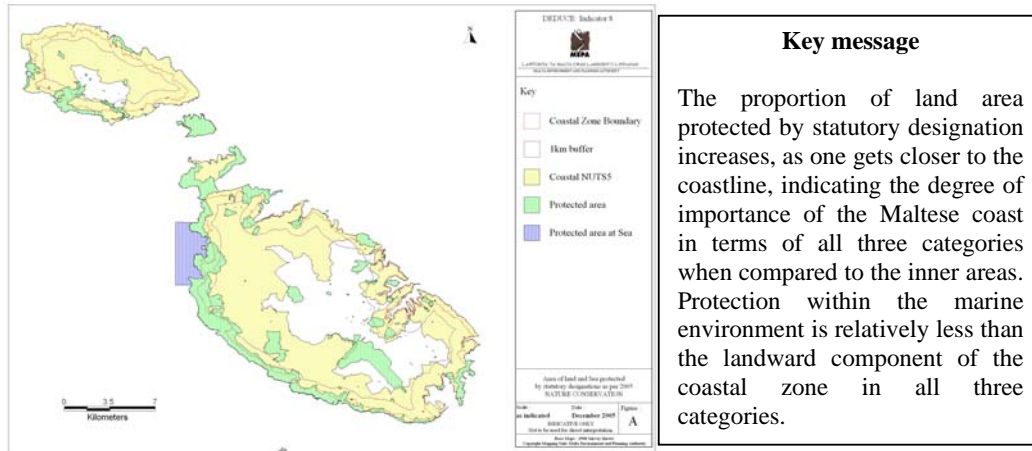
## DEDUCE - The use of GIS in EU funded projects

By S. Conchin, MSc GIS & Environment, MEPA

As you might be aware the use of GIS tools is spread throughout many EU projects and form the basis of all the spatial analysis required to implement or achieve the relevant results. DEDUCE is an INTERREG IIIC project which is based on the application of the EU Recommendation on Integrated Coastal Zone Management adopted by Council and Parliament in 2002. The key objective is to enhance the visibility of coastal information to enable optimum decision-making. The project is focused on the calculation of a set of 27 sustainability indicators for the coast that were prepared for the European Union Expert Group on Integrated Coastal Zone Management. The process includes the development of a methodological framework to calculate these indicators and to identify how best to use them at different levels of decision-making, from the European level to the national level right down to the local level. In the formulation of these indicators, GIS plays a crucial role both in the management of the gathered data as well as in the analysis and formulation of the results. A typical output from one of the measurements calculated by MEPA for DEDUCE is illustrated below.

**Indicator 8** Area of land and sea protected by statutory designations  
**Measurement 8.1** Area protected for nature conservation, landscape or heritage

Category	1995		2005	
	Area (Ha)	%	Area (Ha)	%
National land	1752	5.56	5643	17.90
Coastal NUTS 5	1000	4.24	4732	20.05
Non-Coastal NUTS 5	752	9.49	911	11.50
1km inland buffer	772.2	5.79	4070	30.53
Hinterland 1km	979.8	5.39	1573	8.65
Coastal Zone (CZ)	593.9	9.59	3152	50.89
Hinterland CZ	1158.1	4.57	2491	9.84
0-10km seaward	0	0	848.7	0.58
12nm	0	0	848.7	0.02



Source: MEPA/DEDUCE results 2006

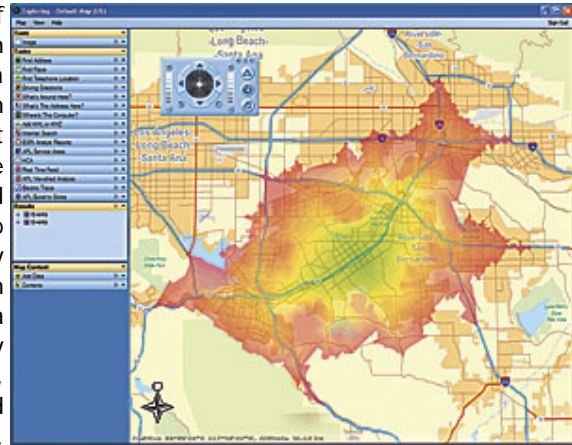
For more information on this project kindly refer to the web address below and follow the "International Funded Projects at MEPA" section.

[http://www.mepa.org.mt/eu\\_int\\_affairs/eu\\_funding/mainpage.htm](http://www.mepa.org.mt/eu_int_affairs/eu_funding/mainpage.htm)



### ArcGIS 9.2 Now Available

ArcGIS 9.2 introduces a new way of sharing and accessing the rich geographic knowledge maintained in a traditional GIS. ArcGIS has been designed as an integrated system that allows desktop users to continue authoring geographic knowledge and have the capability to publish it as Web services using one GIS server. By including all of the ArcGIS technology in a server environment and providing a family of new, easy-to-deploy applications and clients (Web, desktop, and mobile), major growth is anticipated in GIS deployment and use. Together, the desktop, server, and new thin client tools provide a complete system for authoring, serving, and using geographic knowledge by all types of users.



ArcGIS Server offers server-based analysis and geoprocessing, which can be accessed via ArcGIS Explorer.

#### Usability and Quality Enhancements

ArcGIS 9.2 features hundreds of quality and usability enhancements. An entirely new help system featuring intelligent search and an improved tables experience, in addition to new navigation tools and keyboard shortcuts, is among the many improvements designed to make users more efficient and productive in their GIS work.

#### More Information

For more information, visit [www.esri.com/whatsnew](http://www.esri.com/whatsnew).

### MEPA awarded a 'Special Achievement in GIS'

MEPA was awarded a 'Special Achievement in GIS' at the ESRI's 26th Annual User Conference. This is one of the largest professional gatherings attracting GIS professionals from all over the world. MEPA's submission was based on the integration of GIS technology in its forthcoming eApps web based project. This award is given to user sites around the world in recognition of their outstanding work in the GIS field. MEPA was selected to receive this prize from over 100,000 user sites worldwide.

#### Share your news

Share your news with the rest of the Maltese GI community; send us your articles, news and suggestions for the MAGI news letter and web site. Deadline for next news letter is 14<sup>th</sup> March 2007.

e-mail to: [maltagi@gmail.com](mailto:maltagi@gmail.com)